



# COVID-19 PRODUCT RANGE



## WALK THROUGH SANITISATION BOOTH

- To disinfect and sanitise people effectively from harmful and contagious viruses, bacteria and fungi.
- To disinfect parcels and stock entering warehouses and being dispatched from warehouses.
- Can also be used to disinfect shopping trolleys and baskets.
- Designed for interior and exterior use.
- Wheel Chair Friendly

## FOREHEAD TEMPERATURE DETECTION & FACIAL RECOGNITION TERMINAL – **OPTIONAL EXTRA**



Available:  
 5inch  
 7 inch

## MANTRAP SANITISING TURNSTILE

- Sanitise Hands and Feet
- Positively identify user in Turnstile



All enquiries: +27 11 674 4441  
[boomgate@global.co.za](mailto:boomgate@global.co.za)



# COVID-19 PRODUCT RANGE

## HANDS FREE SANITISER DISPENSER



BGS STAINLESS STEEL

F  
O  
O  
T  
  
P  
E  
D  
A  
L



LOW COST MILD STEEL



AUTOMATED – STAINLESS STEEL

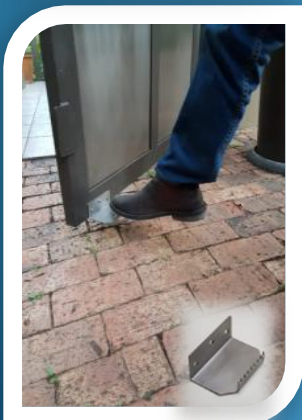


## HANDS FREE SANITISER DISPENSER

- Wall mount
- Elbow pump



HAND SANITISER GEL  
550ML



## FOOT HANDLE

- Open door with foot
- Ideal for offices and factory
- Easy to install



HAND SANITISER SPRAY  
550ML



# COVID-19 PRODUCT RANGE

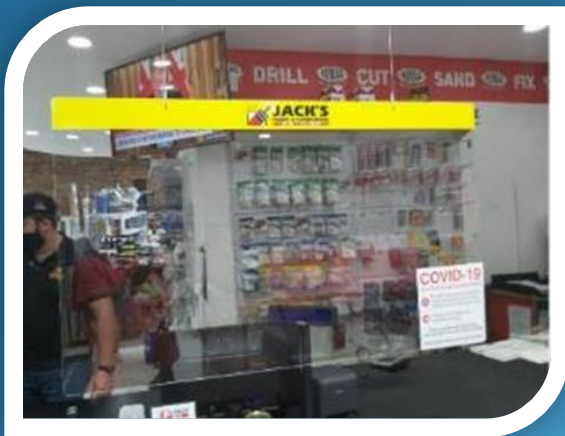


## SNEEZE SCREEN

Free standing 3mm Perspex sneeze screens with wedges for support  
Virus & Germ Prevention Safety Screen to protect staff and customers from spreading the virus when sneezing and coughing.

### Available in various sizes:

600mm x 600mm  
800mm x 600mm  
1000mm x 600mm  
1000mm x 800mm

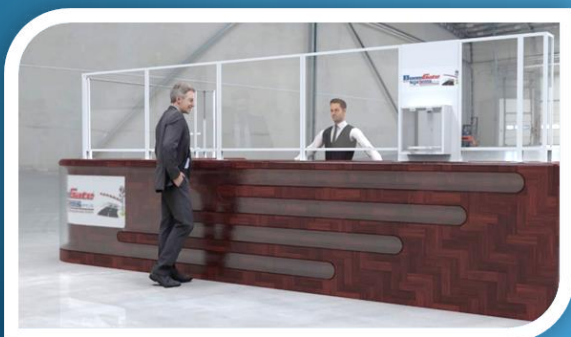


## HANG SNEEZE SCREEN

**Laser cut 2mm Perspex**  
Virus & Germ Prevention Safety Screen to protect staff and customers from spreading the virus when sneezing and coughing.  
Complete with all mounting hardware, customised or generic stickers can be printed.

### Available in various sizes:

800mm x 800mm  
1000mm x 1000mm  
1200mm x 1000mm



## COUNTER SAFETY SCREEN

- Custom made to customer specifications
- Custom made goods cubicle
- Price available on request

**All enquiries: +27 11 674 4441**  
**boomgate@global.co.za**



# COVID-19 PRODUCT RANGE

## SOCIAL DISTANCE ENTRANCE MAT



- Manufactured using a Polypropylene Walk-Off Carpet surface bonded to a recycled rubber base.
- Mats are UV resistant, colour fast, abrasive and hard wearing.
- Supplied with tapered ramp edging for loose lay applications.
- Mat effectively removes dirt, oils, grease and moisture whilst remaining easy to clean.

### Available Sizes

1450mm X 600mm  
1800mm X 600mm

## SHOE-SANI MAT

(PRICE PER SET OF TWO)

### No mess, Sanitises and Cleans Shoes

- 1 x Step on Anti-Bacterial Absorbent Mat with built-in sump for Anti-Bacterial /Anti viral liquid).
- 1 x Poly fibre mat to dry your shoes.

All manufactured using a solid recycled rubber base.  
Supplied with a **FREE** 5L of Sani Liquid Gel.

### Available Sizes

900mm X 600mm  
1200mm X 900mm  
1500mm x 900mm

